

Transportation Alternatives Project Funding Candidate

Simmons Road Multi-use Trail

2.2 Miles Total Trail Length Approx.

A1A/Fletcher Ave./Public Beach Access to Ybor Alvarez Sports Complex/Entrance to Crane Island

- City of Fernandina Beach Boundary
- City of Fernandina Beach Property
- Proposed Trail Head
- Proposed Informative Kiosk
- Public Beach Access
- Viewing Platform
- Simmons Road Multi-Use Path Segment 1
- Simmons Road Multi-Use Path Segment 2
- Simmons Road Multi-Use Path Segment 3
- Existing Bike Lane
- Existing Paved Shoulder
- Existing Pedestrian Facilities

MAP SERIES SRT13:
MASTER

1 inch = 1,000 feet

Nassau County Growth Management 4/11/13



NATURAL DEPRESSION WITH AESTHETIC QUALITIES PRIORITY TO MAINTAIN OAK HAMMOCK IF POSSIBLE.

THE DEPRESSION HAS AN ELEVATION CHANGE OF APPROXIMATELY TEN(10) FEET



PROPOSE 250LF OF 10FT WIDE ELEVATED PATH OVER THE TWO DEPRESSIONS



PICTURED TO THE LEFT IS A PORTION OF THE GLASTONBURY TRAIL



Transportation Alternatives Project Funding Candidate

Simmons Road Multi-use Trail

2.2 Miles Total Trail Length Approx.

A1A/Fletcher Ave./Public Beach Access to Ybor Alvarez Sports Complex/Entrance to Crane Island



Proposed Informative Kiosk



Proposed Trail Head



Proposed Viewing Platform



Public Beach Access



City of Fernandina Beach Property

Simmons Road Multi-Use Path Segment 1

Elevated Path

Simmons Road Multi-Use Path Segment 2

Simmons Road Multi-Use Path Segment 3

Existing Bike Lane

Existing Paved Shoulder

Existing Pedestrian Facilities

MAP SERIES SRT13:

TILE 1



1 inch = 100 feet

Nassau County Growth Management 4/11/13



PICTURED TO THE LEFT IS A CONCEPTUAL EXPRESSION OF A VIEWING PLATFORM OVER LOOKING EGANS LAKE. COST ESTIMATES INCLUDE CONSTRUCTION OF THE VIEWING PLATFORM

COST ESTIMATES INCLUDE RELOCATION AND REPLACEMENT OF GUARD RAIL



PICTURED LEFT EGANS LAKE



WILHARDEE ROAD

SIMMONS ROAD

Transportation Alternatives Project Funding Candidate

Simmons Road Multi-use Trail

2.2 Miles Total Trail Length Approx.

A1A/Fletcher Ave./Public Beach Access to Ybor Alvarez Sports Complex/Entrance to Crane Island

- Proposed Informative Kiosk
- Proposed Trail Head
- Viewing Platform
- Public Beach Access
- City of Fernandina Beach Property
- Simmons Road Multi-Use Path Segment 1
- Elevated Path
- Simmons Road Multi-Use Path Segment 2
- Simmons Road Multi-Use Path Segment 3
- Existing Bike Lane
- Existing Paved Shoulder
- Existing Pedestrian Facilities

MAP SERIES SRT13:
TILE 2

1 inch = 100 feet

Nassau County Growth Management 4/11/13



GATE ESTABLISHED BY NASSAU COUNTY ELIMINATING ACCESS TO UNIMPROVED ROW OF SIMMONS ROAD. PROPOSE TO PLACE MULTI-USE PATH IN CENTER OF ROW OF SIMMONS ROAD.



APPROXIMATE HALF OF SHARED ACCESS. THE UNIMPROVED PORTION OF SIMMONS ROAD PROVIDES ACCESS TO A SINGLE DRIVEWAY/PARCEL. PROPOSE TO CLOSE THE GAP VIA A 14 FOOT WIDE PAVED SURFACE MARKED WITH SHARROWS TO CONTACT TRAIL POINTS.



THE TRANSITION FROM THE AMELIA ROAD ROW TO THE SIMMONS ROAD ROW ON THE WEST SIDE OF AMELIA ROAD WILL REQUIRE THE REPLACEMENT AND EXTENTION OF THE CULVERT RUNNING BENEATH THE UNPAVED PORTION OF SIMMONS ROAD.



POTENTIAL CONFLICTS WITH DRAINAGE STRUCTURES. AERIAL PHOTOGRAPH BELOW DOES NOT INDICATE RECENT IMPROVEMENTS.



Transportation Alternatives Project Funding Candidate

Simmons Road Multi-use Trail

2.2 Miles Total Trail Length Approx.
 A1A/Fletcher Ave./Public Beach Access to Ybor Alvarez Sports Complex/Entrance to Crane Island

- Proposed Informative Kiosk
- Proposed Trail Head
- Public Beach Access
- City of Fernandina Beach Property
- Simmons Road Multi-Use Path Segment 1
- Simmons Road Multi-Use Path Segment 2
- Simmons Road Multi-Use Path Segment 3
- Share The Road
- Existing Pedestrian Facilities

MAP SERIES SRT13:
 TILE 3

1 inch = 100 feet

Nassau County Growth Management 4/11/13



EXISTING TRAIL ROAD
SIMMONS POND TO THE RIGHT
ISLE DE MAI COMMUNITY TO THE LEFT



EXISTING TRAIL ROAD



PROPOSED TRAIL AMENITY:
VIEWING PLATFORM
OVER LOOKING 6.5 ACRE
FRESH WATER POND



Transportation Alternatives Project Funding Candidate

Simmons Road Multi-use Trail

2.2 Miles Total Trail Length Approx.

A1A/Fletcher Ave./Public Beach Access to Ybor Alvarez Sports Complex/Entrance to Crane Island

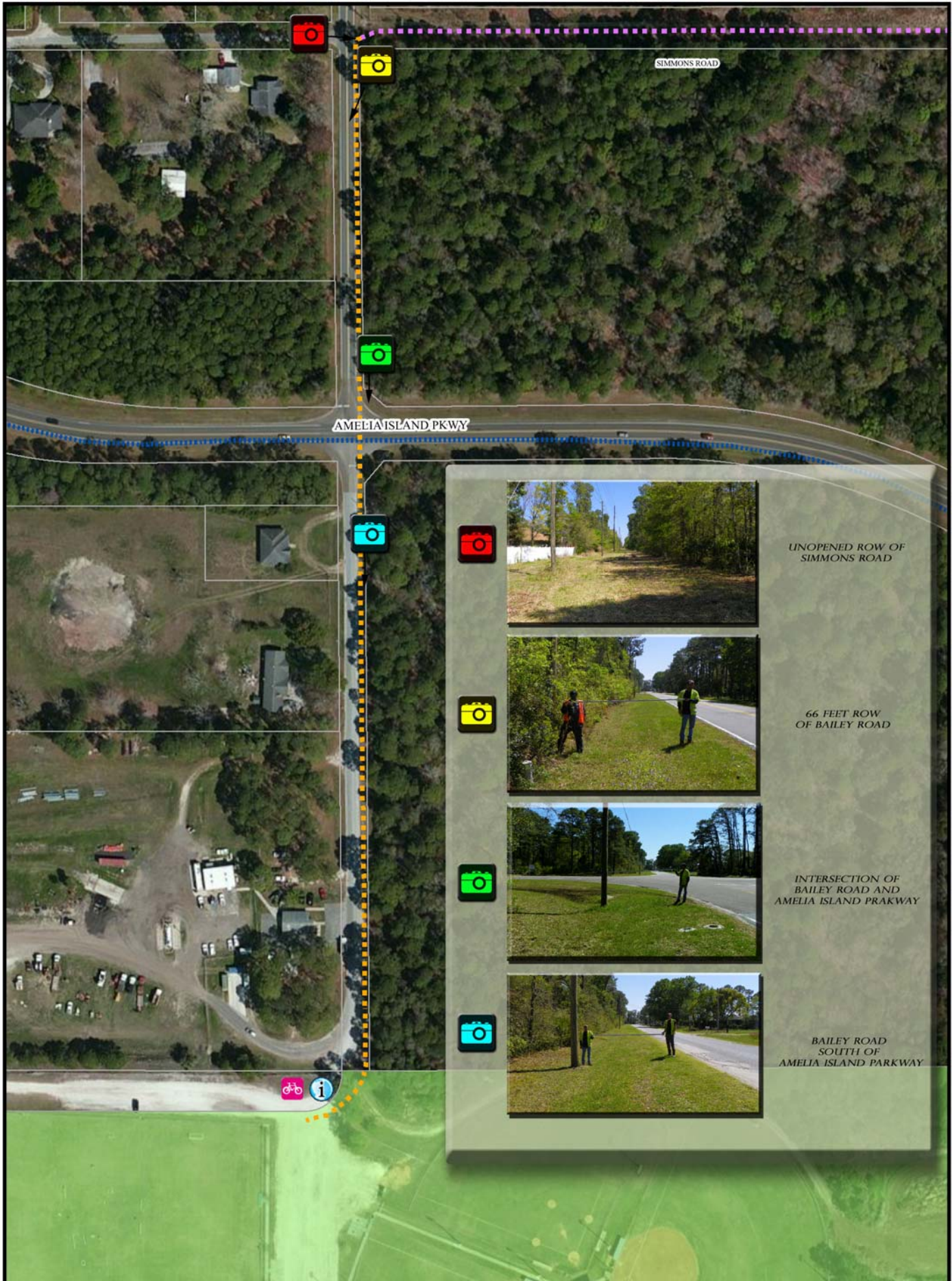
- Proposed Informative Kiosk
- Proposed Trail Head
- Public Beach Access
- City of Fernandina Beach Property
- Simmons Road Multi-Use Path Segment 1
- Simmons Road Multi-Use Path Segment 2
- Simmons Road Multi-Use Path Segment 3
- Share The Road
- Existing Pedestrian Facilities
- Viewing Platform

MAP SERIES SRT13:
TILE 4





1 inch = 100 feet
Nassau County Growth Management 4/11/13



Transportation Alternatives Project Funding Candidate

Simmons Road Multi-use Trail

2.2 Miles Total Trail Length Approx.

A1A/Fletcher Ave./Public Beach Access to Ybor Alvarez Sports Complex/Entrance to Crane Island

-  Proposed Trail Head
-  Proposed Informative Kiosk
-  City of Fernandina Beach Property
-  Simmons Road Multi-Use Path Segment 2
-  Simmons Road Multi-Use Path Segment 3
-  Existing Pedestrian Facilities

MAP SERIES SRT13:
TILE 5



1 inch = 150 feet

Nassau County Growth Management 4/11/13