

# Appendix D, Plans and Drawings, Excerpts from:

---

## AMELIA ISLAND TRAIL - SEGMENT 1

### INVITATION TO BID (ITB)

Bid No. NC22-029-ITB

Nassau County  
Board of County Commissioners  
Nassau County, Florida

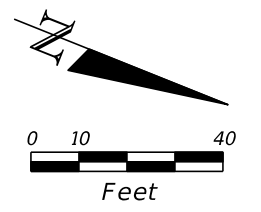
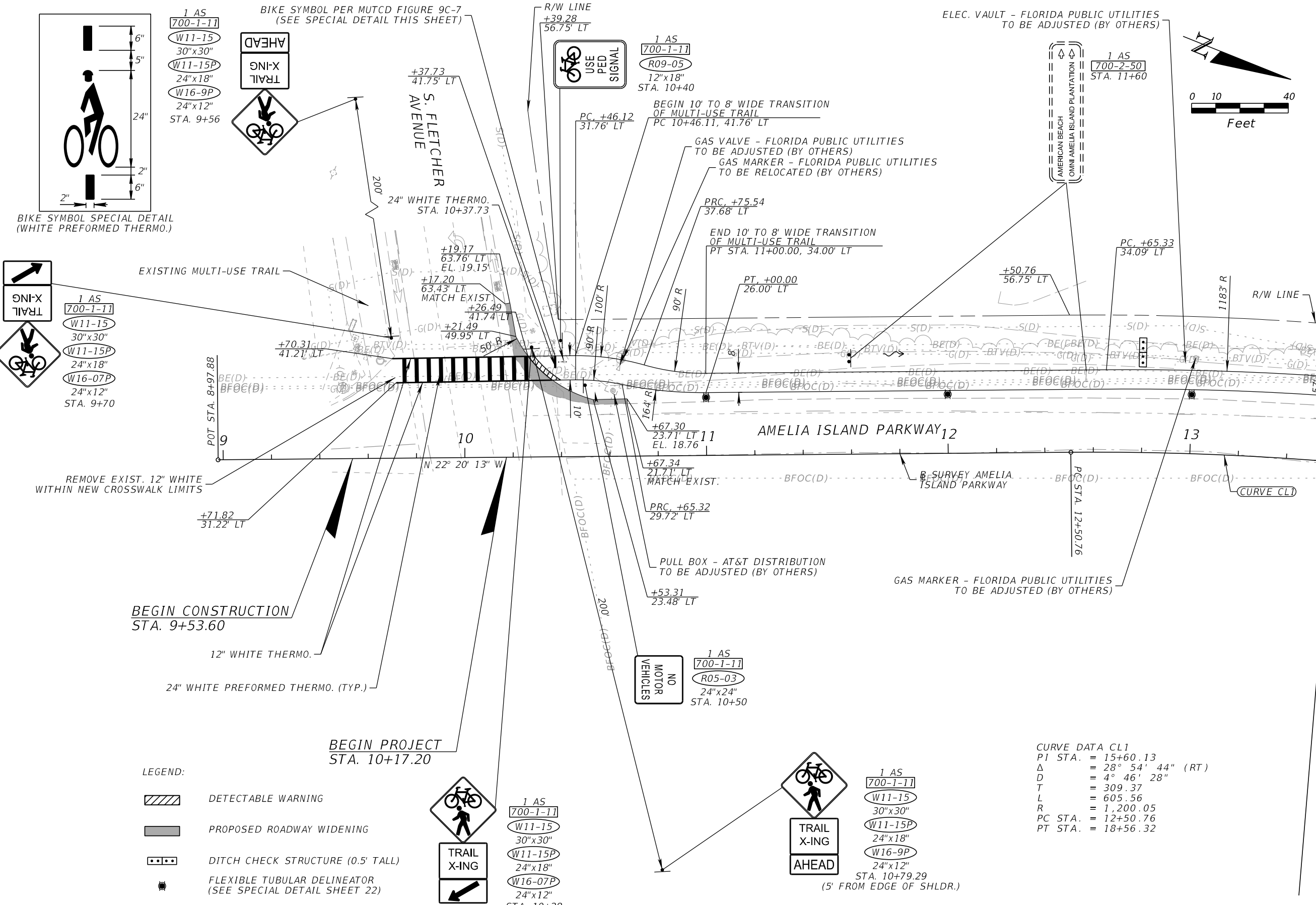


PROJECT MANUAL  
CONTAINING  
BIDDING REQUIREMENTS  
CONTRACTOR'S PROPOSAL AGREEMENT  
GENERAL CONDITIONS  
SUPPLEMENTARY CONDITIONS AND SPECIFICATIONS

July 2022

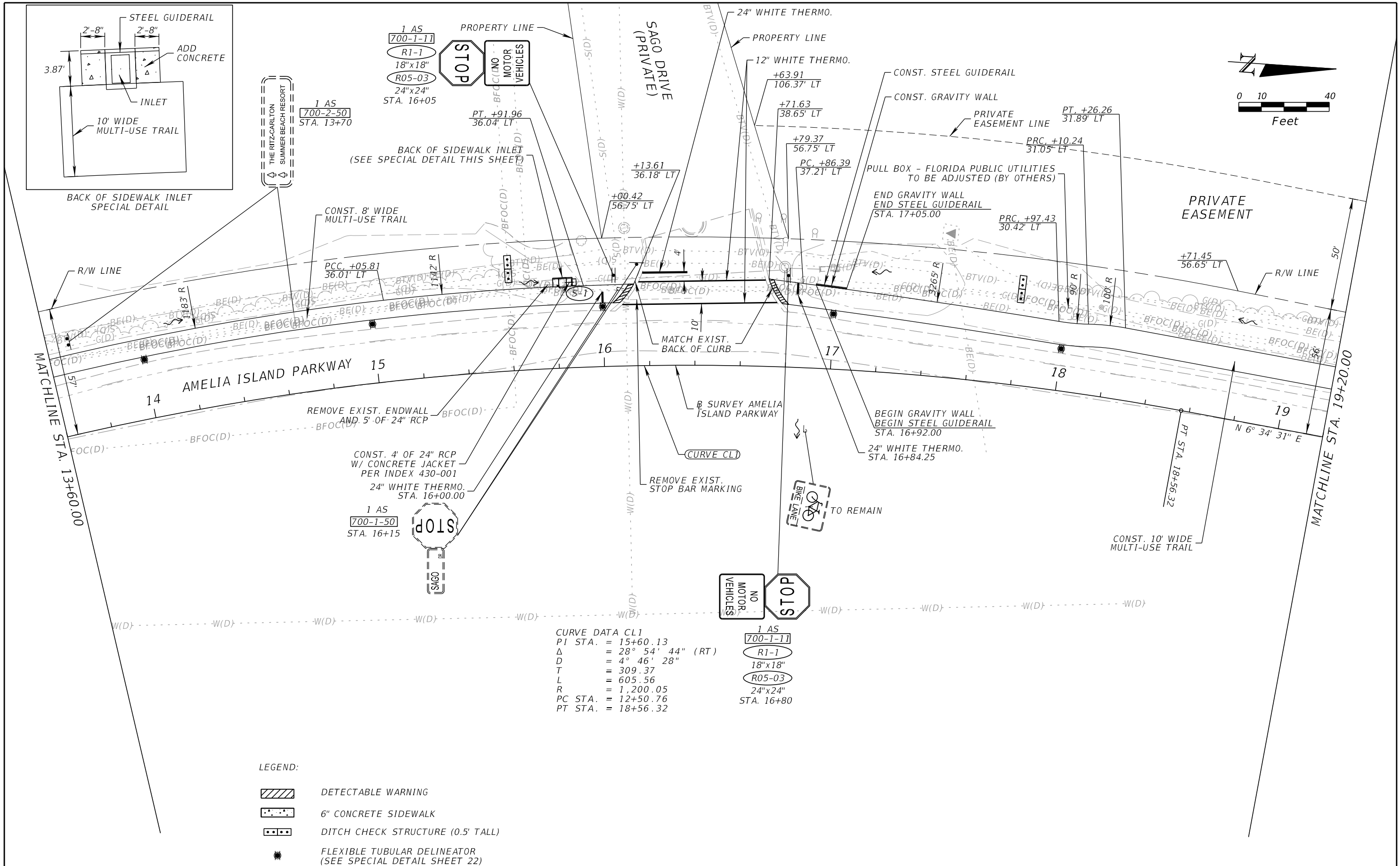
Prepared By: STV

5200 Belfort Road | Suite 400 | Jacksonville, FL 32256



REVISIONS				KEVIN M. SHOEMAKER, P.E. P.E. LICENSE NO.: 84149 STV INCORPORATED 5200 BELFORT ROAD, SUITE 400 JACKSONVILLE, FL 32256	STATE OF FLORIDA DEPARTMENT OF TRANSPORTATION			<b>ROADWAY PLAN (1)</b>  SHEET NO. 10
DATE	DESCRIPTION	DATE	DESCRIPTION		ROAD NO.	COUNTY	FINANCIAL PROJECT ID	
					NASSAU	437334-1-58-01		

THE OFFICIAL RECORD OF THIS SHEET IS THE ELECTRONIC FILE DIGITALLY SIGNED AND SEALED UNDER RULE 61G15-23.004, F.A.C.



1 AS  
 700-1-11  
 R1-1  
 18"x18"  
 R05-03  
 24"x24"  
 STA. 16+05

1 AS  
 700-1-50  
 STA. 16+15

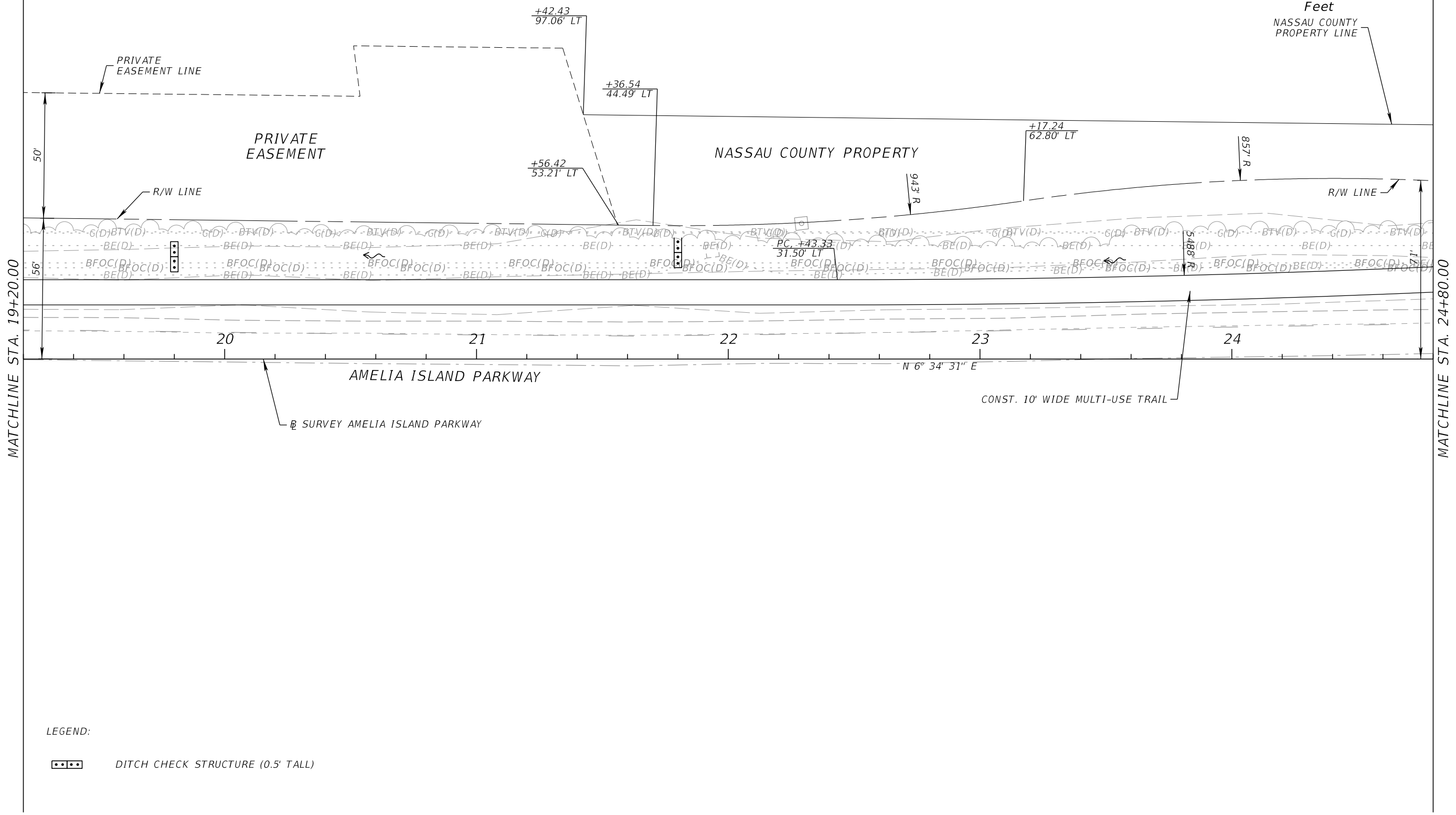
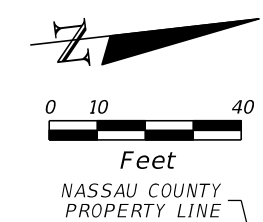
1 AS  
 700-1-11  
 R1-1  
 18"x18"  
 R05-03  
 24"x24"  
 STA. 16+80

**CURVE DATA CL1**  
 PI STA. = 15+60.13  
 $\Delta$  = 28° 54' 44" (RT)  
 D = 4° 46' 28"  
 T = 309.37  
 L = 605.56  
 R = 1,200.05  
 PC STA. = 12+50.76  
 PT STA. = 18+56.32

- LEGEND:**
- DETECTABLE WARNING
  - 6" CONCRETE SIDEWALK
  - DITCH CHECK STRUCTURE (0.5' TALL)
  - FLEXIBLE TUBULAR DELINEATOR (SEE SPECIAL DETAIL SHEET 22)

REVISIONS				KEVIN M. SHOEMAKER, P.E. P.E. LICENSE NO.: 84149 STV INCORPORATED 5200 BELFORT ROAD, SUITE 400 JACKSONVILLE, FL 32256	STATE OF FLORIDA DEPARTMENT OF TRANSPORTATION			<b>ROADWAY PLAN (2)</b>	SHEET NO.  11
DATE	DESCRIPTION	DATE	DESCRIPTION		ROAD NO.	COUNTY	FINANCIAL PROJECT ID		
					NASSAU	437334-1-58-01			

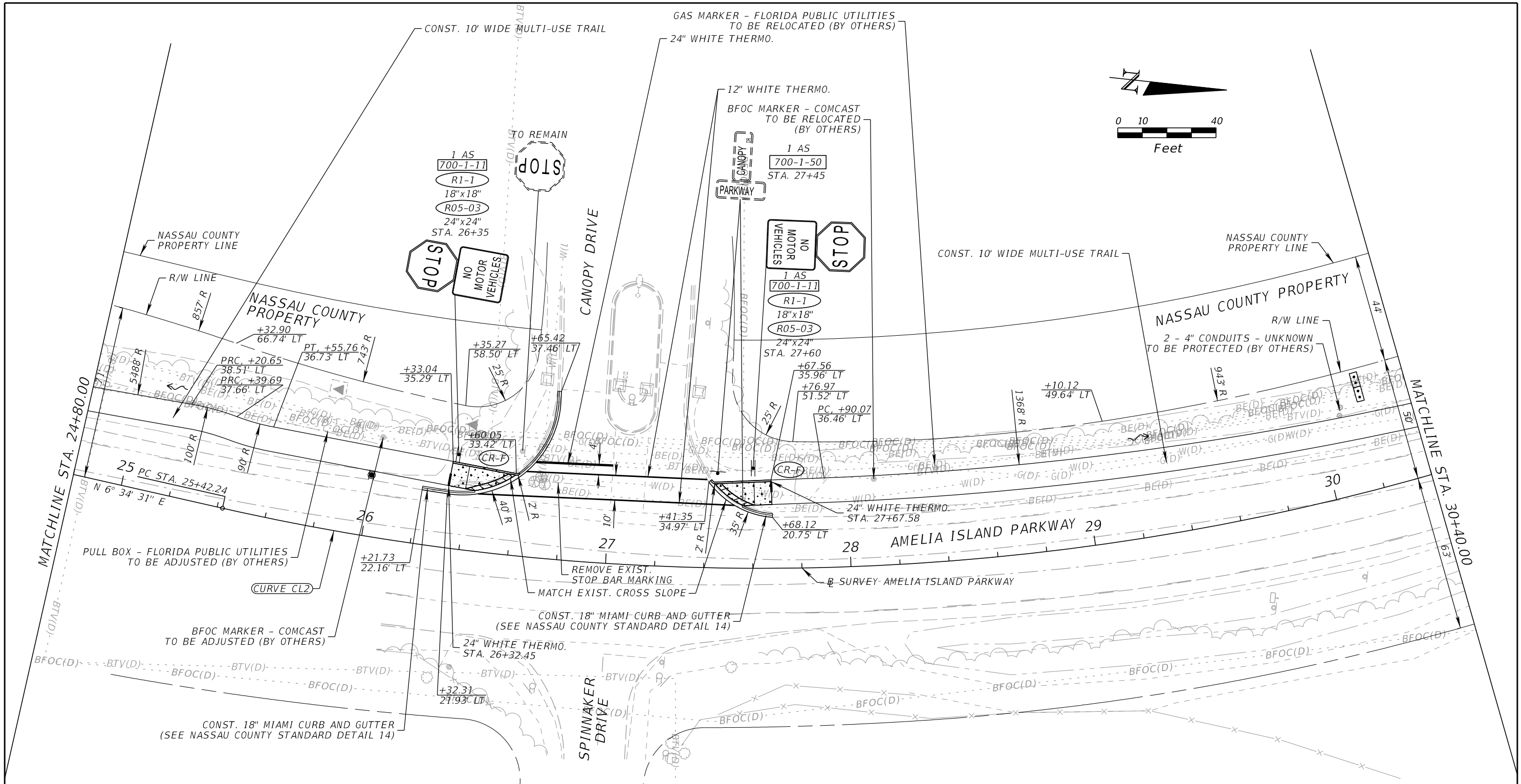
THE OFFICIAL RECORD OF THIS SHEET IS THE ELECTRONIC FILE DIGITALLY SIGNED AND SEALED UNDER RULE 61G15-23.004, F.A.C.



LEGEND:

☐☐☐ DITCH CHECK STRUCTURE (0.5' TALL)

REVISIONS				KEVIN M. SHOEMAKER, P.E. P.E. LICENSE NO.: 84149 STV INCORPORATED 5200 BELFORT ROAD, SUITE 400 JACKSONVILLE, FL 32256	STATE OF FLORIDA DEPARTMENT OF TRANSPORTATION			SHEET NO.  12
DATE	DESCRIPTION	DATE	DESCRIPTION		ROAD NO.	COUNTY	FINANCIAL PROJECT ID	
					NASSAU	437334-1-58-01	ROADWAY PLAN (3)	

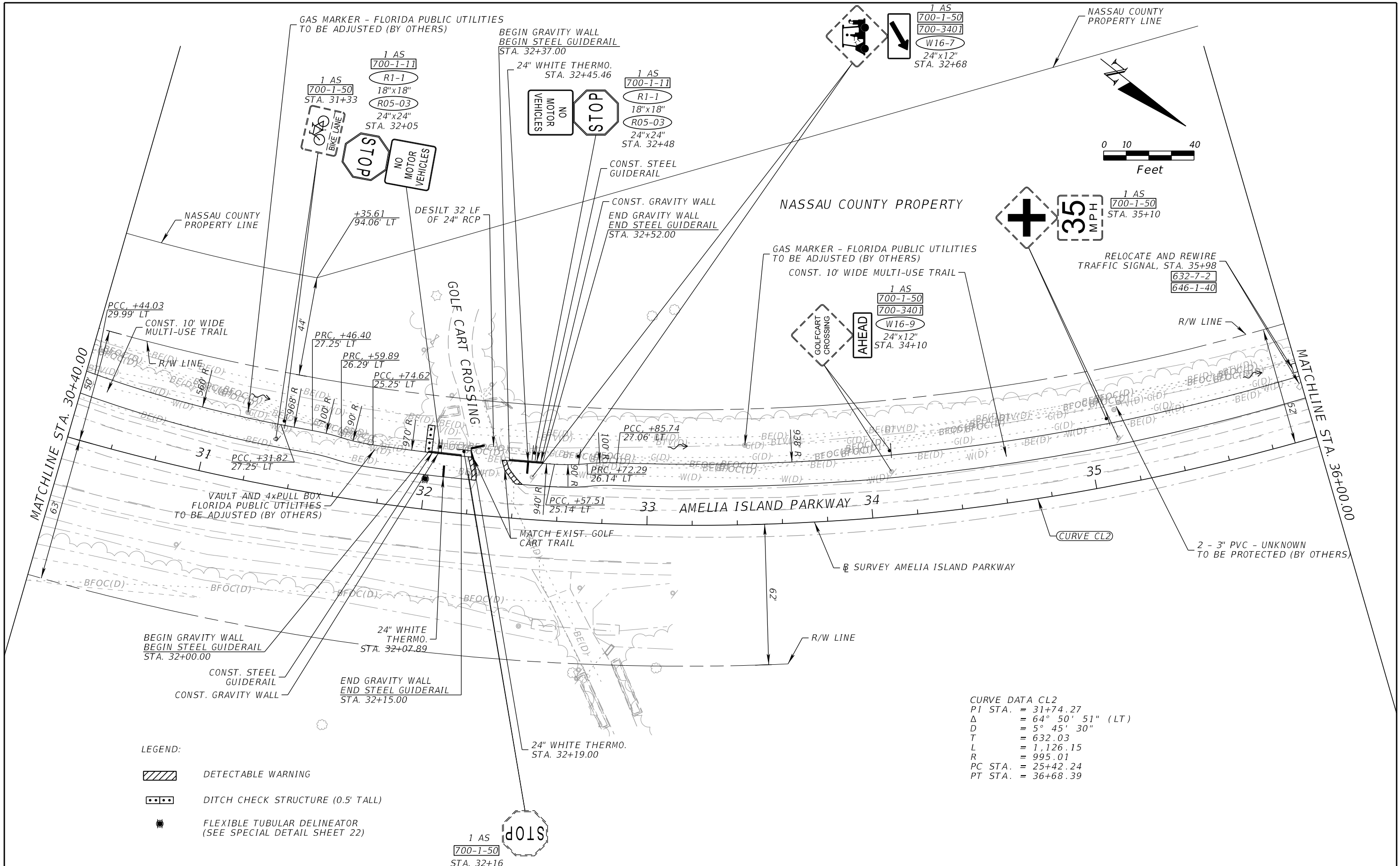


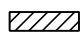
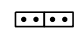

LEGEND:

- DETECTABLE WARNING
- 6" CONCRETE SIDEWALK
- DITCH CHECK STRUCTURE (0.5' TALL)
- FLEXIBLE TUBULAR DELINEATOR (SEE SPECIAL DETAIL SHEET 22)

CURVE DATA CL2  
 PI STA. = 31+74.27  
 $\Delta$  = 64° 50' 51" (LT)  
 D = 5° 45' 30"  
 T = 632.03  
 L = 1,126.15  
 R = 995.01  
 PC STA. = 25+42.24  
 PT STA. = 36+68.39

REVISIONS				KEVIN M. SHOEMAKER, P.E. P.E. LICENSE NO.: 84149 STV INCORPORATED 5200 BELFORD ROAD, SUITE 400 JACKSONVILLE, FL 32256	STATE OF FLORIDA DEPARTMENT OF TRANSPORTATION			<b>ROADWAY PLAN (4)</b>	SHEET NO.
DATE	DESCRIPTION	DATE	DESCRIPTION		ROAD NO.	COUNTY	FINANCIAL PROJECT ID		13
					-	NASSAU	437334-1-58-01		

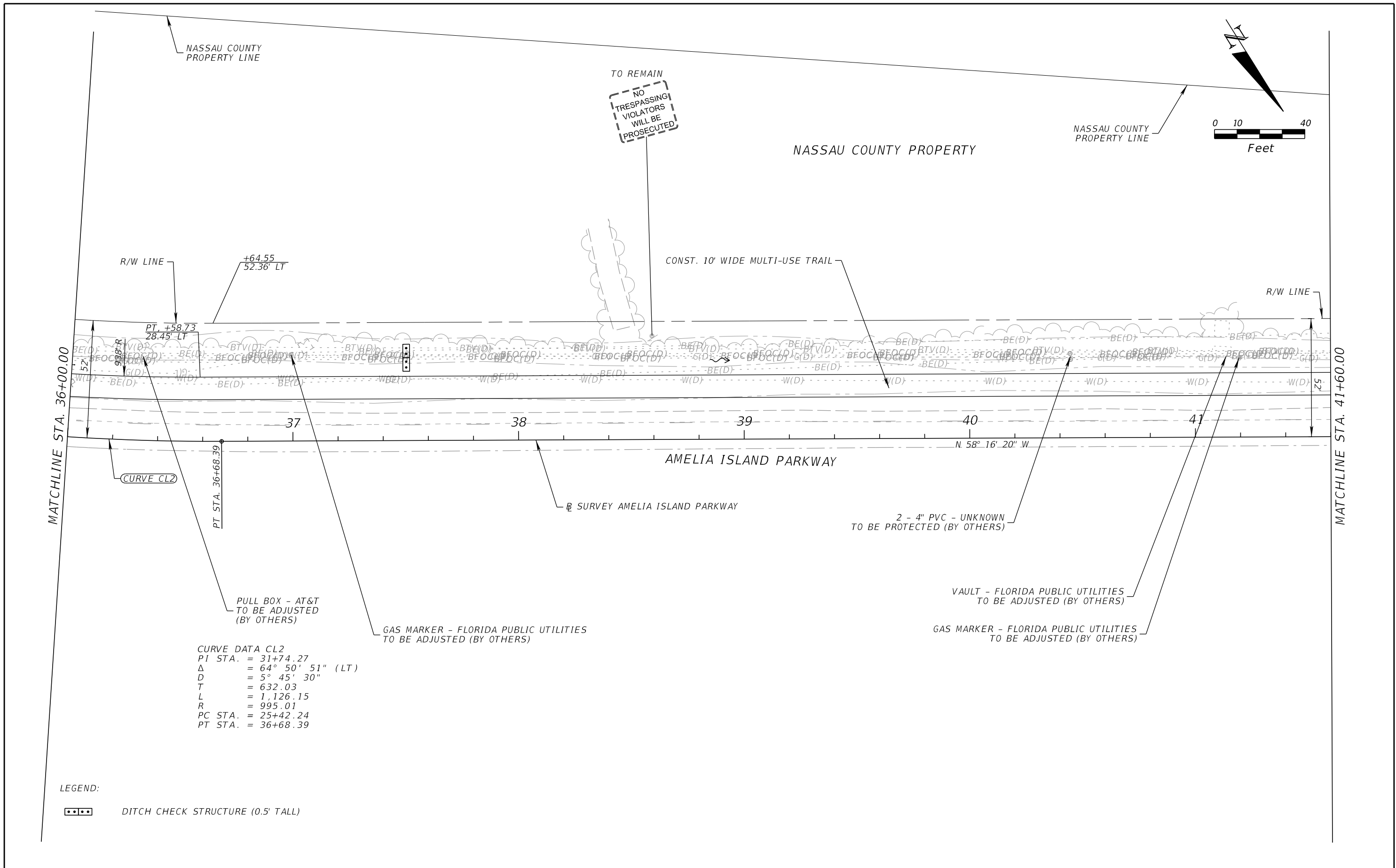


- LEGEND:
-  DETECTABLE WARNING
  -  DITCH CHECK STRUCTURE (0.5' TALL)
  -  FLEXIBLE TUBULAR DELINEATOR (SEE SPECIAL DETAIL SHEET 22)

CURVE DATA CL2  
 PI STA. = 31+74.27  
 $\Delta$  = 64° 50' 51" (LT)  
 D = 5° 45' 30"  
 T = 632.03  
 L = 1,126.15  
 R = 995.01  
 PC STA. = 25+42.24  
 PT STA. = 36+68.39

REVISIONS				KEVIN M. SHOEMAKER, P.E. P.E. LICENSE NO.: 84149 STV INCORPORATED 5200 BELFORT ROAD, SUITE 400 JACKSONVILLE, FL 32256	STATE OF FLORIDA DEPARTMENT OF TRANSPORTATION			<b>ROADWAY PLAN (5)</b>	SHEET NO.  14
DATE	DESCRIPTION	DATE	DESCRIPTION		ROAD NO.	COUNTY	FINANCIAL PROJECT ID		
					-	NASSAU	437334-1-58-01		

THE OFFICIAL RECORD OF THIS SHEET IS THE ELECTRONIC FILE DIGITALLY SIGNED AND SEALED UNDER RULE 61G15-23.004, F.A.C.



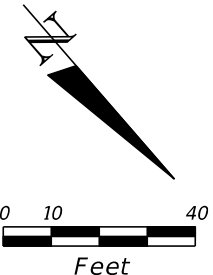
**CURVE DATA CL2**  
 PI STA. = 31+74.27  
 $\Delta$  = 64° 50' 51" (LT)  
 D = 5° 45' 30"  
 T = 632.03  
 L = 1,126.15  
 R = 995.01  
 PC STA. = 25+42.24  
 PT STA. = 36+68.39

**LEGEND:**  
 [Symbol] DITCH CHECK STRUCTURE (0.5' TALL)

REVISIONS				KEVIN M. SHOEMAKER, P.E. P.E. LICENSE NO.: 84149 STV INCORPORATED 5200 BELFORT ROAD, SUITE 400 JACKSONVILLE, FL 32256	STATE OF FLORIDA DEPARTMENT OF TRANSPORTATION			<b>ROADWAY PLAN (6)</b> SHEET NO. 15
DATE	DESCRIPTION	DATE	DESCRIPTION		ROAD NO.	COUNTY	FINANCIAL PROJECT ID	
					NASSAU	437334-1-58-01		

THE OFFICIAL RECORD OF THIS SHEET IS THE ELECTRONIC FILE DIGITALLY SIGNED AND SEALED UNDER RULE 61G15-23.004, F.A.C.

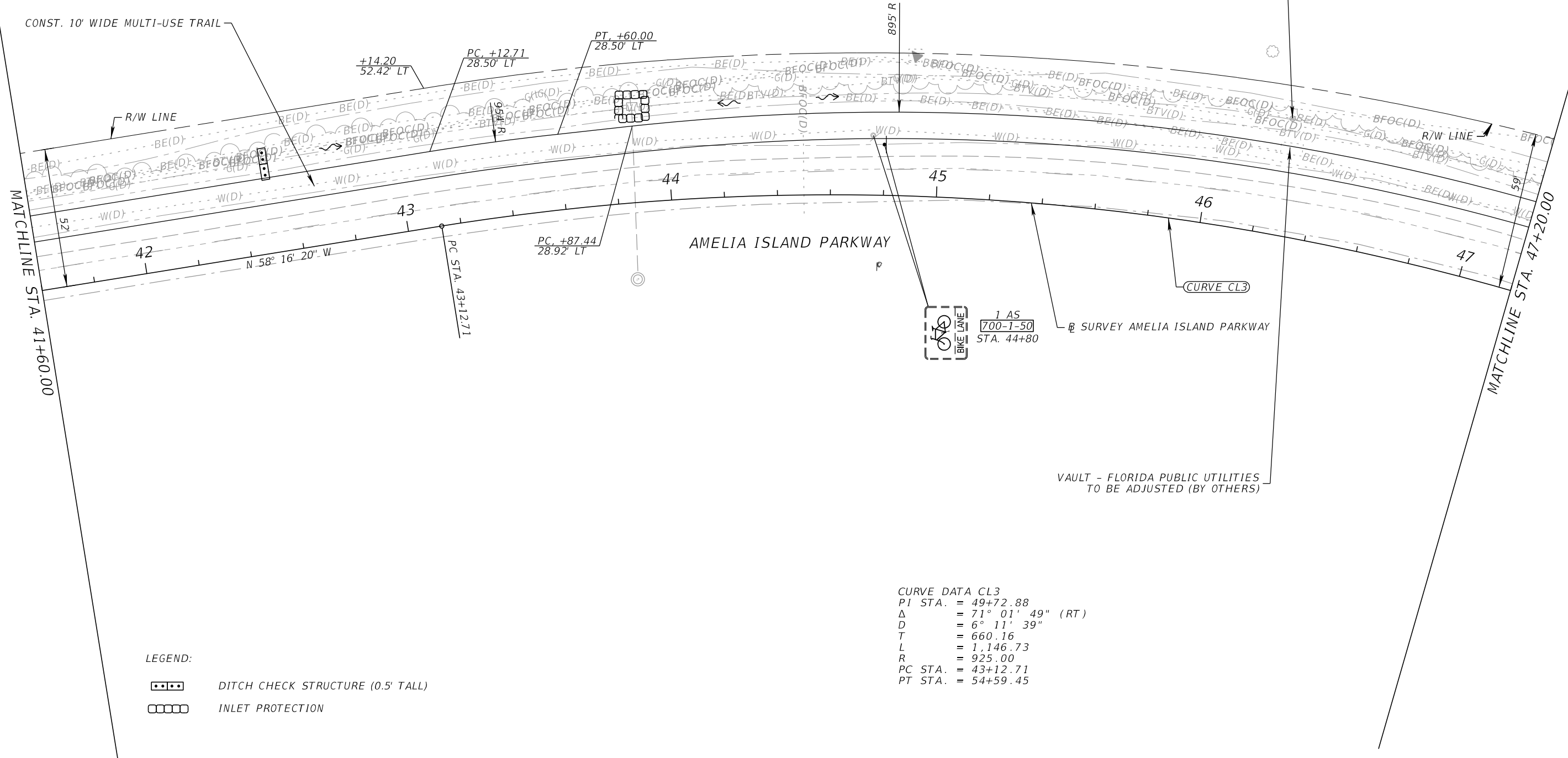
NASSAU COUNTY PROPERTY



NASSAU COUNTY PROPERTY LINE

GAS MARKER - FLORIDA PUBLIC UTILITIES TO BE ADJUSTED (BY OTHERS)

CONST. 10' WIDE MULTI-USE TRAIL



- LEGEND:
- DITCH CHECK STRUCTURE (0.5' TALL)
  - INLET PROTECTION

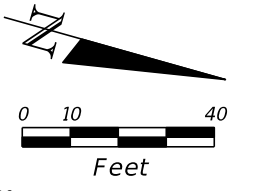
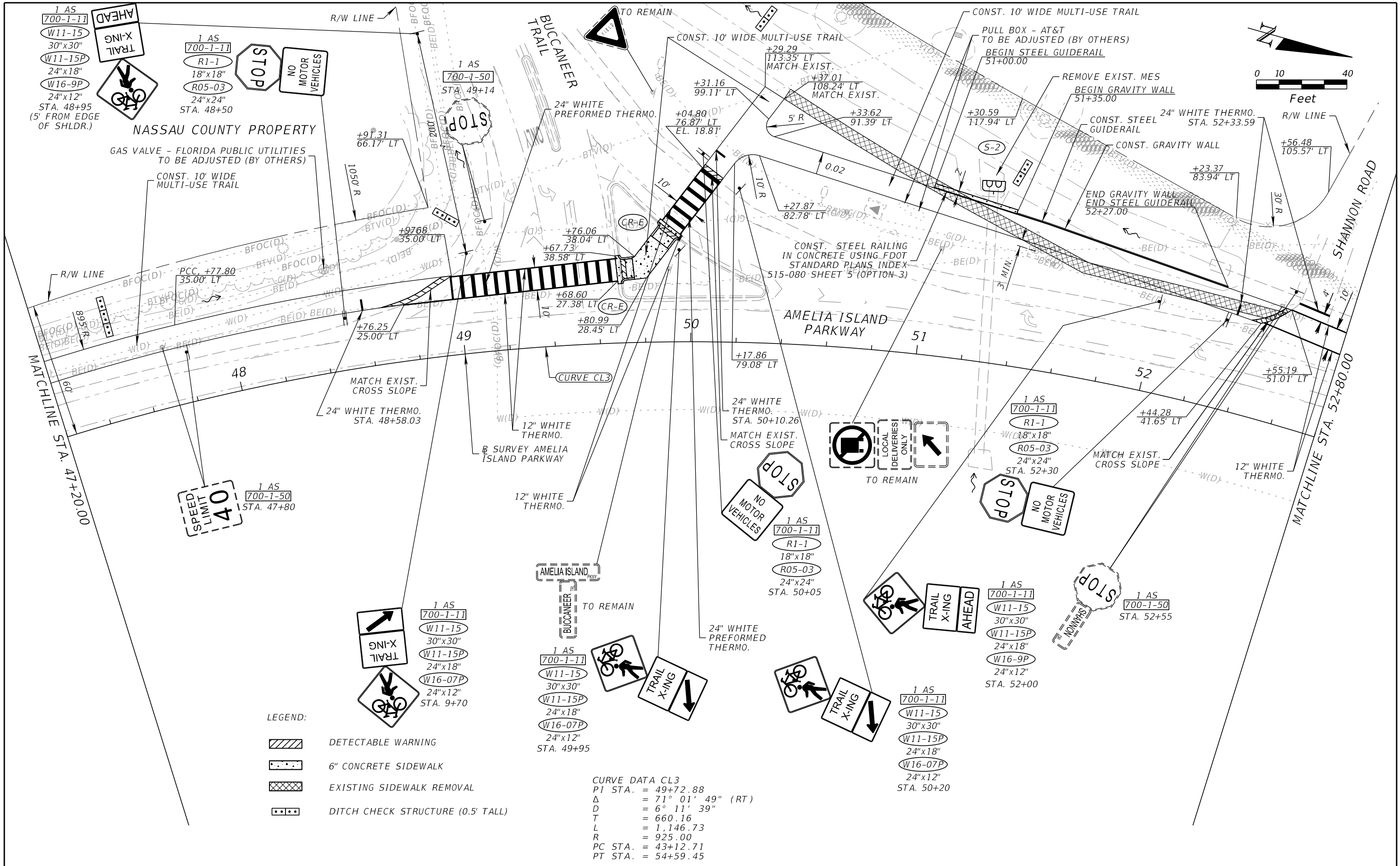
CURVE DATA CL3  
 PI STA. = 49+72.88  
 Δ = 71° 01' 49" (RT)  
 D = 6° 11' 39"  
 T = 660.16  
 L = 1,146.73  
 R = 925.00  
 PC STA. = 43+12.71  
 PT STA. = 54+59.45

VAULT - FLORIDA PUBLIC UTILITIES TO BE ADJUSTED (BY OTHERS)

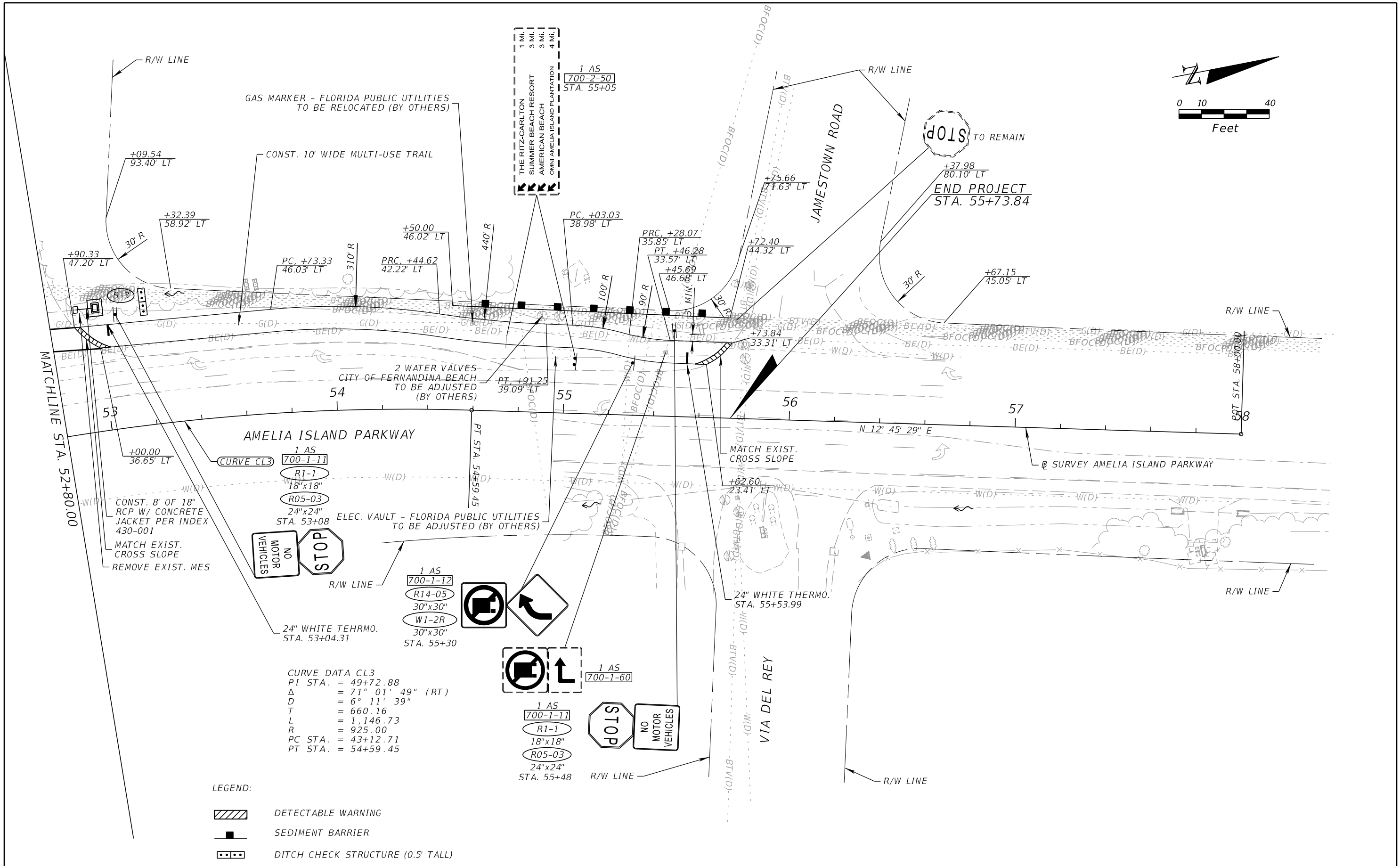
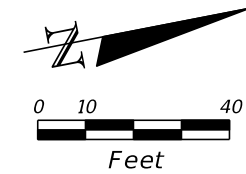
REVISIONS				KEVIN M. SHOEMAKER, P.E. P.E. LICENSE NO.: 84149 STV INCORPORATED 5200 BELFORT ROAD, SUITE 400 JACKSONVILLE, FL 32256	STATE OF FLORIDA DEPARTMENT OF TRANSPORTATION			SHEET NO.  16
DATE	DESCRIPTION	DATE	DESCRIPTION		ROAD NO.	COUNTY	FINANCIAL PROJECT ID	
					NASSAU	437334-1-58-01	ROADWAY PLAN (7)	

THE OFFICIAL RECORD OF THIS SHEET IS THE ELECTRONIC FILE DIGITALLY SIGNED AND SEALED UNDER RULE 61G15-23.004, F.A.C.





REVISIONS				KEVIN M. SHOEMAKER, P.E. P.E. LICENSE NO.: 84149 STV INCORPORATED 5200 BELFORT ROAD, SUITE 400 JACKSONVILLE, FL 32256	STATE OF FLORIDA DEPARTMENT OF TRANSPORTATION			SHEET NO.  17
DATE	DESCRIPTION	DATE	DESCRIPTION		ROAD NO.	COUNTY	FINANCIAL PROJECT ID	
					NASSAU	437334-1-58-01		



REVISIONS				KEVIN M. SHOEMAKER, P.E. P.E. LICENSE NO.: 84149 STV INCORPORATED 5200 BELFORT ROAD, SUITE 400 JACKSONVILLE, FL 32256	STATE OF FLORIDA DEPARTMENT OF TRANSPORTATION			<b>ROADWAY PLAN (9)</b>  SHEET NO.  18
DATE	DESCRIPTION	DATE	DESCRIPTION		ROAD NO.	COUNTY	FINANCIAL PROJECT ID	
					NASSAU	437334-1-58-01		

THE OFFICIAL RECORD OF THIS SHEET IS THE ELECTRONIC FILE DIGITALLY SIGNED AND SEALED UNDER RULE 61G15-23.004, F.A.C.